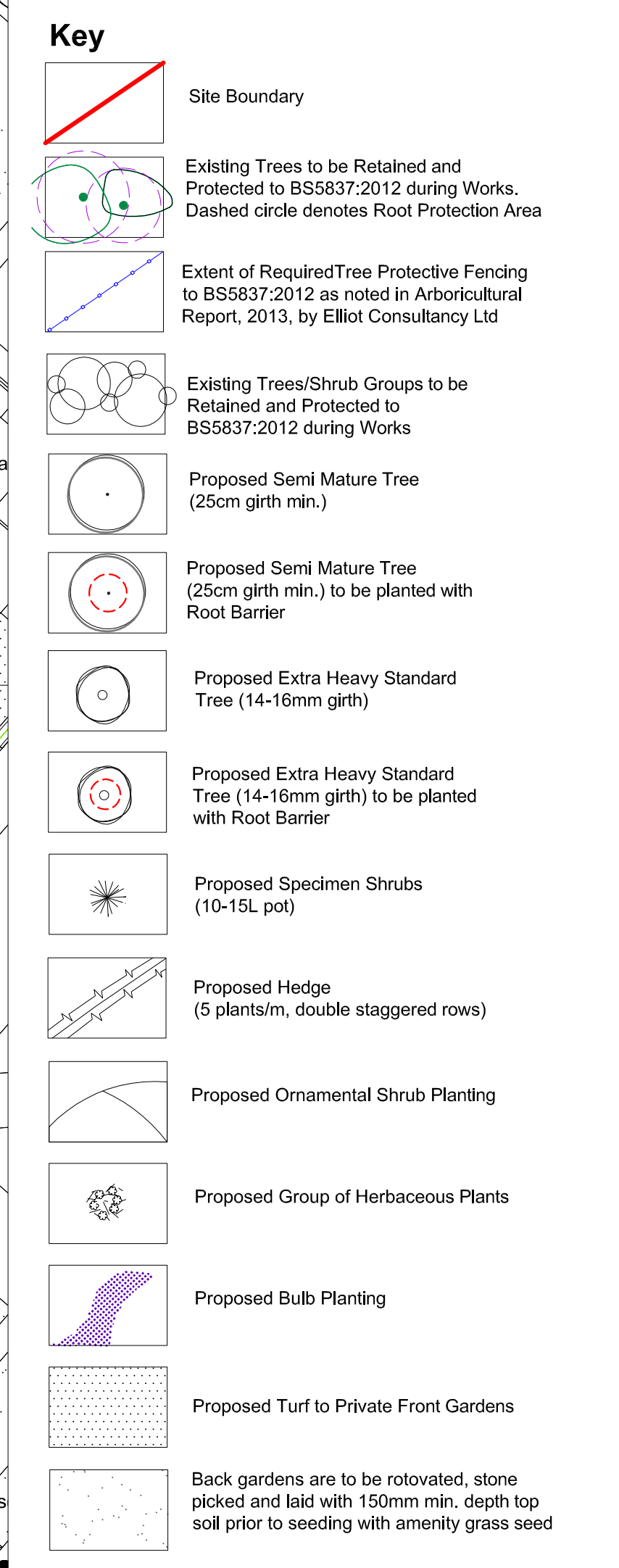


**Location Plan NTS**

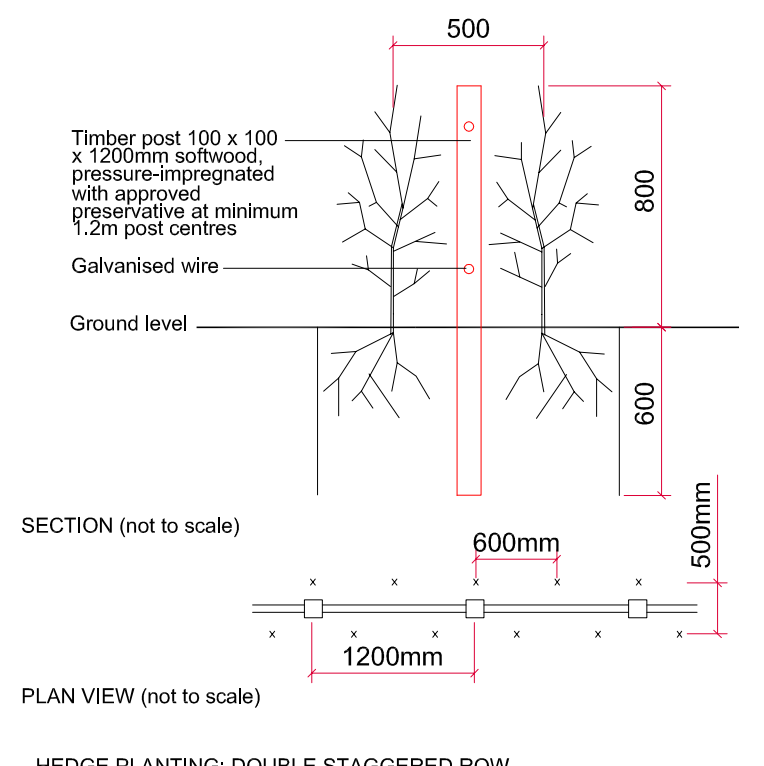
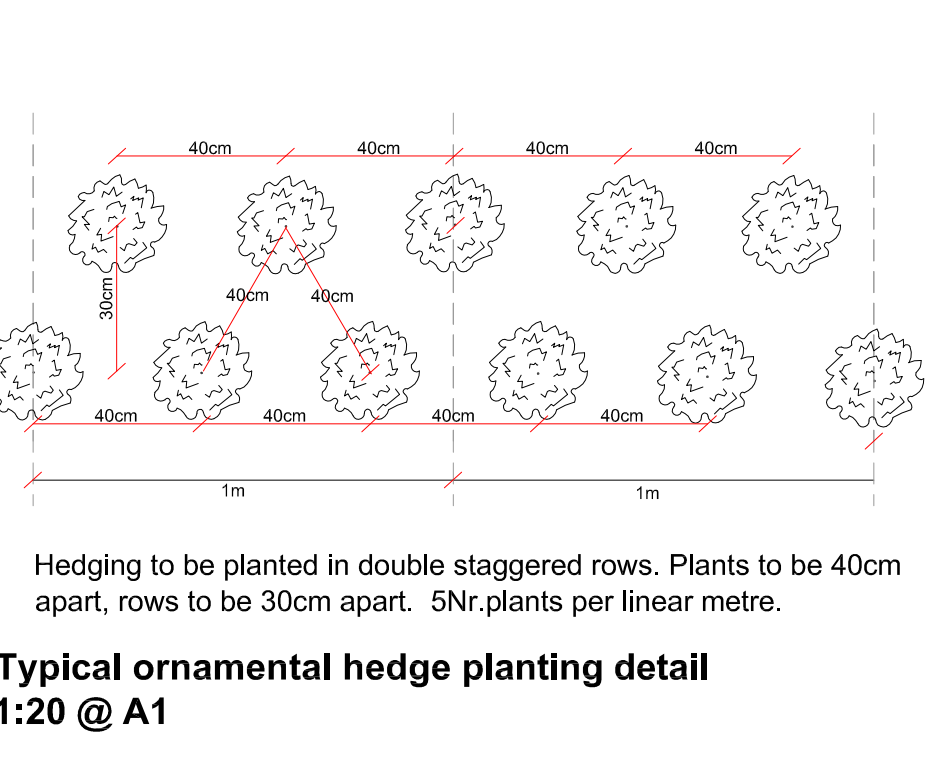
Please also refer to the following detailed planting proposal drawings, which are to be read as a set:

- 867/100 (Sheet 1 of 5)
- 867/101 (Sheet 2 of 5)
- 867/102 (Sheet 3 of 5)
- 867/104 (Sheet 5 of 5) includes Planting Schedule and Outline Specification



**NOTES:**

- A Tree Preservation Order covers the trees on this site.
- Existing retained trees on site are to be protected during construction in line with drawing ARB/CP/757/TCP. This can be found as Appendix 2 in the Pre-development Tree Report by Elliot Consultancy Ltd, 2013. A copy of this drawing and report should be made available by the Employer in order to show the locations of trees and roots which are to be protected during works, and the standard of tree protection required (to BS5837:2012).
- Because an agreed number of trees were removed from site to facilitate this housing development, a large number of new trees are proposed to help mitigate their loss. All proposed tree locations have been approved by Bellway Homes and South Tyneside Planners, therefore trees are to be planted as shown.
- Based on available services information, the use of proposed root barriers is shown to new trees within 4m of services. Root barriers are to be installed as per manufacturer's instructions. If additional services are encountered then trees may need to be planted with the appropriate root barrier, and services may need to be re-directed to allow for tree planting as shown.



**SAFETY, HEALTH & ENVIRONMENTAL INFORMATION**

In addition to the hazards / risks normally associated with the types of work detailed on this drawing, note the following:

Construction

- 1. No abnormal risk
- Maintenance / Cleaning
- 1. No abnormal risk
- Decommissioning / Demolition
- 1. No abnormal risk

It is assumed that all works will be carried out by a competent contractor, working where appropriate, to an approved method statement. This is not an exhaustive list and reference should be made to the Health and Safety Plan.

Rev.	CP	RS	06/15
Proj.	SOUTH TYNESIDE COLLEGE	Loc.	NE31
Client.	Bellway Homes		
Dwg.	Detailed Planting Proposals (Sheet 4 of 5)		
Scale.	1:200@A1	Date.	06/15
Drawing No.	867/103	Rev.	-

221 Durham Road  
 Low Fell  
 Gateshead  
 NE9 5AB  
 Tel: 0191 440 0034  
 Fax: 0191 420 3490  
 studio@southerngreen.co.uk